



Stamford Green

Primary School and Nursery



Welcome to our community newsletter - Issue 6

Spring 2024

Headteacher's Headlines

Dear Residents,

We have had a very busy start to the spring term, with our Y6 children concluding their visits to the Houses of Parliament, our Y5's performing at the O2 and our Y4's attending a First Aid Course.

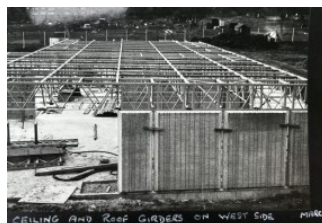
Before we break for Easter, the children will have a chance to attend the very popular school disco and take part in the annual Easter Challenge.

Now that the evenings are lighter we hope that it will encourage more parents/carers walk to school to collect their children. We are constantly reminding our school community of the importance of being considerate to our neighbours when driving to school. This includes following the unofficial one way system up Christ Church Mount, so the school is on the left, at the busy times of the school day.



We are always innovating in order to foster a love of learning with the children. Recently, Mr Loughlin has been encouraging the children to rise to the challenge and gain a Blue Peter badge for their reading. So far, seventy children are on our Blue Peter badge roll of honour.

This initiative, follows author visits from AF Harrold and Zehra Hicks in an effort to inspire the children's love of reading and writing as well as celebrating the school being open for fifty years. You can read more about the celebrations [here](#).



Wishing you all a very happy Easter.

Mrs Louise Druce
Headteacher

Dates for Diaries

All our PTA Events can be found on the school website.

We will be holding our annual Colour Run at school in the summer term which always proves to be great fun for everyone attending.

The date for the event this year is Saturday 15.6.24

Term Dates

Easter Holidays

Friday 29 March 2024 to
Monday 15 April 2024

Summer Holidays

Wednesday 24 July 2024 to
Monday 2 September 2024

INSET (Staff training days:
Monday 22 July 2024
Tuesday 23 July 2024

Coming soon...

The summer term can be busy with sports fixtures after school.

Please rest assured that we always promote safe driving and sensible parking, that does not inconvenience our neighbours, with any schools that are visiting Stamford Green.

Safeguarding in our community

Did you know that keeping children safe is everyone's business?

More information can be found [here](#).

Safeguarding and promoting the welfare of children is defined as:

- Protecting children from abuse and maltreatment.
- Preventing impairment of children's mental and physical health or development;
- Ensuring that children grow up in circumstances consistent with the provision of safe and effective care.
- Taking action to enable all children to have the best outcomes.
- Preventing impairment of children's mental or physical health or development.

At school we have a Safeguarding [Policy](#) and have three Designated Safeguarding Leaders (DSLs). Should you ever need to contact a DSL because you are concerned or worried about a child, please find the details of how to do so below:

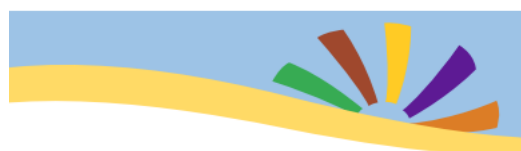
Designated Safeguarding Lead (DSL) is: Mrs Kathryn Dray Contact details: dsl@stamford-green.surrey.sch.uk

Deputy DSL is: Mrs Louise Druce Contact details: dsl@stamford-green.surrey.sch.uk

Deputy DSL is: Miss Vicky Swann Contact details: dsl@stamford-green.surrey.sch.uk

Alternatively, please call the school and ask for a DSL - 01372 725 383.

Please see the below flyers about our Generations Coffee Mornings and our Come and Play Toddler Sessions. If you would like to join either of these events, we would love to see you there.



Generations Coffee

Morning

Stamford Green School Council would like to invite grandparents, retired neighbours or friends and

- * anyone elderly who may be feeling lonely and would like a chat, to our Generations Coffee Morning. Tea, coffee and biscuits provided!

Tuesday 21 November 2023

Tuesday 20 February 2023

Tuesday 21 May 2023

10.30 am - 11.45 am

Stamford Green Primary School and Nursery

Come along to the main school office

If you can please let us know if you are attending by telephoning the school office - 01372 725383-Many thanks.



Come and Play

At Stamford Green

Make new friends and have some fun at our free come and play sessions for pre-school children of all ages and their parents/carers. Everyone is welcome!

Monday 8th January 2024 9.00am to 10.30am

Thursday 8th February 2024 9.00am to 10.30am

Wednesday 6th March 2024 9.00am to 10.30am

Stamford Green Primary School and Nursery, Christchurch Mount, Epsom, KT19 8LU

Entry is through the South Gate via Christchurch Mount only